

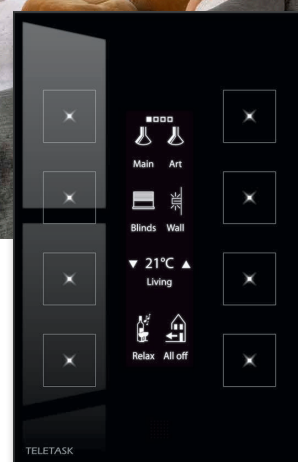


# TELETASK

trendsetter in domotics



© The Art of Living magazine, Germán Bourgeat



## AURUS-OLED THE DOMOTIC BOOKLET

***AURUS-OLED, the TELETASK touch panel with white OLED display has a massive glass front plate with eight buttons which can control up to 32 functions. It will improve your interior design to the highest level.***

The AURUS-OLED can be used to control all connected functions like there are LED lights (switching, dimming and multi-colour), curtains, drapes, shutters, sun blinds, doors, gates, heating, cooling, audio, etc..... It is also possible to show messages and alarms on the display, such as: 'side door still open', 'dinner is ready', 'someone at the front door', 'take out the garbage', etc....

This touch panel comes in a minimalistic architecture and is especially designed to use multiple home automation buttons at one location on your wall.

AURUS-OLED has basically eight buttons and is available in glossy WHITE, BLACK, SILVER

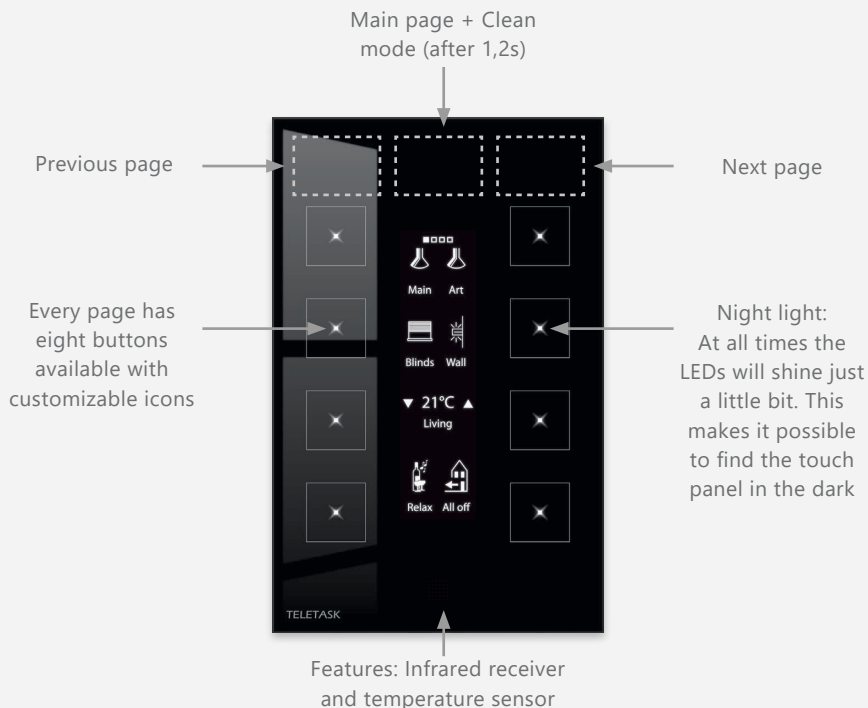
GREY and GOLD finish. The colour exists of a ceramic print at the back of the front plate which resists to any environmental influence for decades. Love at first sight for you and your guests? This capacitive technology\* panel is divided into eight large sensitive areas with eight LEDs and a graphical OLED display. At the top of the AURUS-OLED touch panel, close to the upper edge, there are three 'hidden' buttons to thumb (like in a book) through four pages of eight buttons each. This results in a total of 32 functions to control. You can have for example a 'main' page, a 'curtains'- page, a 'heating/cooling'-page and a 'music'-page. But there are no limits: Any button of any page can be configured to any function you like.

The icons on the display can be fully styled to your preferences. You can select from the large TELETASK library (lights, heating/cooling, curtains, sun blinds, A/V...) or you can design your own icons. When a button function is





**TELETASK**  
trendsetter in domotics



White



Black



Silver grey



Gold

activated (ON) the icon is clearly visible (all white), when the function is OFF the icon remains visible but fades to soft-white.

During the night the eight feedback LEDs are soft illuminated, for easy location of your buttons in the dark.

The 32 functions can be extended by using a TELETASK remote control. The mini remote control has 16 functions via the AURUS-OLED and the large remote control has extra functions for heating/cooling, audio and RGB control on top.

AURUS-OLED also has a built-in sensor for room temperature control. Both heating and cooling are supported.

... and a built-in buzzer will give you the acoustic feedback for every chosen function.

**\*WHAT IS CAPACITIVE TOUCH TECHNOLOGY?**

TELETASK introduces the newest capacitive touch technology in the AURUS-OLED. At the back of the glass front plate, there are two imaginary buttons. These buttons are made out of antennas which sense the approach of a human finger, which activate its predefined function.

**TECHNICAL**

About any standard single wall box can be used for both brick- and plasterboard walls. It can be mounted in both vertical and horizontal position.

If you don't need eight buttons and a display, please check the other AURUS family members. You can easily exchange AURUS- family panels in the wall in a matter of seconds.

**DIMENSIONS**

Total thickness on the wall:

AURUS-OLED:

90 W x 140 H (glass plate) x 11 D (mm)

**CONNECTIONS**

AUTOBUS: with dedicated AUTOBUS connection set (included with the device).

**MAINTENANCE**

Use only dry microfiber cloth.

**ORDER REFERENCES**

TDS12022WH	White
TDS12022BL	Black
TDS12022AU	Gold
TDS12022LG	Silver grey

